

Bissell®

BOLT™
CORDLESS HAND VACUUM
USER GUIDE



1316 SERIES

IMPORTANT SAFETY INSTRUCTIONS

READ ALL INSTRUCTIONS BEFORE USING YOUR HAND VACUUM.

Always connect to a polarized outlet (one slot is wider than the other) for charging. Unplug from outlet when not in use and before conducting maintenance. When using an electrical appliance, basic precautions should be observed, including the following:

WARNING

TO REDUCE THE RISK OF FIRE, ELECTRIC SHOCK, OR INJURY:

- » Do not use outdoors or on wet surfaces.
- » Do not allow to be used as a toy. Close attention is necessary when used by or near children.
- » Do not use for any purpose other than described in this User's Guide. Use only manufacturer's recommended attachments.
- » Do not use with damaged cord or plug. If appliance is not working as it should, has been dropped, damaged, left outdoors, or dropped into water, have it repaired at an authorized service center.
- » Do not pull or carry by cord, use cord as a handle, close a door on cord, or pull cord around sharp edges or corners. Do not run appliance over cord. Keep cord away from heated surfaces.
- » Do not unplug by pulling on cord. To unplug, grasp the plug, not the cord.
- » Do not handle charger, including charger plug and charger terminal with wet hands.
- » Do not charge the unit outdoors.
- » Use only the charger supplied by the manufacturer to recharge.
- » Do not incinerate the appliance even if it severely damaged. The batteries can explode in a fire.
- » Do not put any object into opening.
- » Do not use with any opening blocked.
- » Keep openings free of dust, lint, hair and anything that may reduce airflow.
- » Keep hair, loose clothing, fingers, and all parts of body away from openings and moving parts.
- » Use extra care when cleaning stairs.
- » Do not use to pick up flammable or combustible materials (lighter fluid, gasoline, kerosene, etc.) or use in areas where they may be present.
- » Do not pick up toxic material (chlorine bleach, ammonia, drain cleaner, etc.).
- » Do not use vacuum cleaner in an enclosed space filled with vapors given off by oil base paint, paint thinner, some moth proofing substances, flammable dust, or other explosive or toxic vapors.
- » Do not pick up hard or sharp objects such as glass, nails, screws, coins, etc.
- » Do not pick up anything that is burning or smoking, such as cigarettes, matches, or hot ashes.
- » Do not use without dust cup or filters in place.
- » Use only on dry, indoor surfaces.

SAVE THESE INSTRUCTIONS FOR FUTURE USE

This model is for household use only.

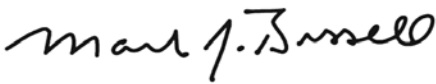
Thanks for buying a BISSELL vacuum

We're glad you purchased a BISSELL hand vacuum. Everything we know about floor care went into the design and construction of this complete, high-tech home cleaning system.

Your BISSELL hand vacuum is well made, and we back it with a limited one-year warranty. We also stand behind it with a knowledgeable, dedicated Consumer Care department, so, should you ever have a problem, you'll receive fast, considerate assistance.

My great-grandfather invented the floor sweeper in 1876. Today, BISSELL is a global leader in the design, manufacture, and service of high quality homecare products like your BISSELL hard floor cleaner.

Thanks again, from all of us at BISSELL.



Mark J. Bissell
Chairman & CEO

Safety Instructions.....	2
Product View.....	4
Assembly.....	5
Operations.....	6
Maintenance & Care.....	7-8
Replacement Parts.....	9
Troubleshooting.....	10
Warranty.....	11
Service.....	11
Consumer Care.....	12
Product Registration.....	12



Product View

- 1 Dirt Cup
- 2 Filter
- 3 Washable Filter Cup
- 4 Charging Light
- 5 Dirt Cup Release
- 6 Power Button
- 7 Charging Adapter Plug
- 8 Crevice Tool with Dusting Brush



WARNING

Plastic film can be dangerous. To avoid danger of suffocation, keep away from babies and children.

WARNING

Do not plug in your hard floor cleaner until you are familiar with all instructions and operating procedures.

WARNING

To reduce the risk of electric shock, turn power switch off and disconnect polarized plug from electrical outlet before performing maintenance or troubleshooting checks.

Assembly

Your hand vacuum comes fully assembled.

 **WARNING**
Do not plug in your cordless hand vacuum until you are familiar with all instructions and operating procedures.

Charging

*****IMPORTANT*** ALWAYS TURN UNIT OFF PRIOR TO CHARGING***

*failing to do so may result in battery not fully charging

1. Insert charging adapter plug into the charging port on the back of the unit.
2. Plug the adapter into the wall outlet. The power LED lights will illuminate when charging. Charge the unit completely for 8 hours prior to first use.

NOTE: The adaptor may become warm during charging - this is normal.

3. When the unit is fully discharged, approximately 8 hours of charging time is required for the battery to regain full capacity.



Charging		
Battery Status	LED Color	Charging
Full	Green	Green
Low	Red	Slow Blinking Red

Operations

WARNING

Do not operate appliance with damp or wet filters or without all filters in place.

Power button

The power button is located on the top of the handle

Using your hand vacuum

1. Unplug unit from the charging adapter.
2. Push power button ON.

2. Power Switch



Using hand vacuum accessories

To use hand vacuum accessories, insert the end of the tool into the end of the hand vacuum prior to turning hand vacuum ON.

Tip

» Accessories can be combined together or used individually.



Maintenance & Care

To maintain maximum cleaning performance, the following maintenance steps must be performed:

WARNING

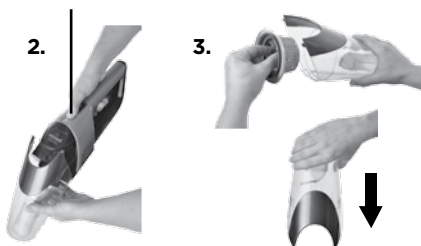
To reduce the risk of electric shock, turn power switch off and disconnect polarized plug from electrical outlet before performing maintenance or troubleshooting checks.

Emptying the dirt cup

Dirt cup should be emptied before debris reaches the FULL line on cup.

1. Turn power OFF.
2. Hold the hand vacuum vertically and depress release button on the front to release dirt cup.
3. Grasp filter tabs and pull vertically to remove filter cup and empty dirt into waste container.
4. Replace filter back into the dirt cup and attach dirt cup to hand vacuum until it snaps securely into place.

Release Button



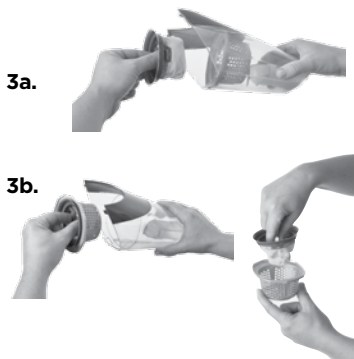
Cleaning or replacing the filter

The key to maximum performance is having a clean filter. Cleaning the filter after each use will help your vacuum operate at peak efficiency.

Use only genuine BISSELL model number 1316 replacement filters in your BISSELL vacuum. To purchase visit WWW.BISSELL.COM or call 1-800-237-7691.

To clean filter:

1. Turn power OFF.
2. Remove the dirt cup as directed in “Emptying the dirt cup” in previous section.
 - 3a. To remove filter from the filter cup, grasp filter tabs, turn counterclockwise and lift up. Tap firmly against the inside of a waste container, removing any visible dirt.
 - 3b. To remove filter cup from the dirt cup, grasp filter tabs and lift up to remove the washable filter cup from the dirt cup. Grip tabs, turn counterclockwise and lift up to remove filter from filter cup.
4. Replace filter back into the filter cup then turn clockwise to lock into place.
5. Attach filter cup back into the dirt cup and attach to hand vacuum until it snaps securely in place.



NOTE: After heavy usage, you may clean the filter and filter cup by washing it gently by hand in warm water and mild dish detergent. Rinse thoroughly and make certain it is completely dry before replacing it.

Nozzle maintenance

Keep nozzle clean and free of debris by wiping with clean, damp cloth.

Maintenance & Care

Disposal of batteries

If your Bolt Cordless Hand Vacuum is to be disposed of, the batteries should be removed and disposed of properly.

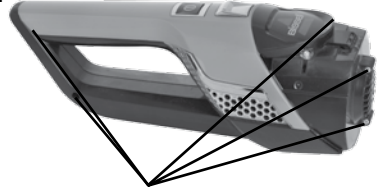
- 1. IMPORTANT:** Unplug charger.
2. Remove dirt cup from handle.
3. Remove (2) Phillips head screws and remove the lens from the hand vacuum.
4. Remove (2) Phillips head screws from the hand vacuum cover.
5. Lift off the hand vacuum cover.
6. Take out push rod.
7. Remove (5) Phillips head screws from the side of the hand vacuum.
8. Remove the entire battery assembly from the cover.
9. Cut wires from the PCB and wrap the wire ends with insulation tape.
10. Keep Battery Pack together – DO NOT separate individual batteries. For specific disposal instructions of batteries, please contact RBRC (Rechargeable Battery Recycling Corporation) **1-800-822-8837** or visit **www.rbrc.com**.
11. Discard remainder of product

CAUTION: Disconnecting the battery will destroy the appliance and void the warranty.

WARNING

To reduce the risk of electric shock, turn power switch off and disconnect polarized plug from electrical outlet before performing maintenance or troubleshooting checks.

7.



5 screws

WARNING

This product contains Nickel Metal Hydride (Ni-MH) rechargeable batteries. According to Federal and State regulations, removal and proper disposal of Ni-MH batteries is required. For removal of the batteries in your Bolt see instructions on this page.



Replacement Parts

These items are available for your BISSELL Bolt cordless hand vacuum.
Call 1-800-237-7691 or visit www.bissell.com

PART #	PART NAME		PART #	PART NAME	
1604734	Filter		1604481	Washable Filter Cup	
1604480	Dirt cup assembly		1604268	Charging Adapter Plug	
1604272	Crevice Tool with Dusting Brush		1604271	Pet Nozzle	



Troubleshooting

WARNING

To reduce the risk of electric shock, turn power switch off and disconnect polarized plug from electrical outlet before performing maintenance or troubleshooting checks.

Problem	Possible causes	Remedies
Vacuum won't turn on	Battery is fully discharged	Charge battery. Follow charging battery instructions on page 5
Vacuum cleaner has low suction	Dirt container is full	Empty dirt container
	Dirt container is not installed properly	Position container correctly and snap firmly into place
	Filters need cleaning	Follow filter instructions on page 7
	Filters need replacing	Visit www.bissell.com or call 1-800-237-7691 to order replacement filters.
	Battery needs charging	Charge battery. Follow charging battery instructions on page 5
Visible dirt escaping from vacuum	Dirt container is full of debris	Empty dirt container
	Filter is missing or installed incorrectly	Check filter for correct installation
Hand vacuum won't charge	Machine is in the ON position	Set the hand vacuum in the OFF position
	Not the correct charger	Use only the charger that comes with the machine

Please do not return this product to the store.

Other maintenance or service not included in the manual should be performed by an authorized service representative.

Thank you for selecting a BISSELL product.

For any questions or concerns, BISSELL is happy to be of service. Contact us directly at 1-800-237-7691.

Warranty

This warranty gives you specific legal rights, and you may also have other rights which may vary from state to state. If you need additional instruction regarding this warranty or have questions regarding what it may cover, please contact BISSELL Consumer Care by E-mail, telephone, or regular mail as described below.

Limited One-Year Warranty

Subject to the *EXCEPTIONS AND EXCLUSIONS identified below, upon receipt of the product BISSELL will repair or replace (with new or remanufactured components or products), at BISSELL's option, free of charge from the date of purchase by the original purchaser, for one year any defective or malfunctioning part.

See information below on "If your BISSELL product should require service".

This warranty applies to product used for personal, and not commercial or rental service. This warranty does not apply to fans or routine maintenance components such as filters, belts, or brushes. Damage or malfunction caused by negligence, abuse, neglect, unauthorized repair, or any other use not in accordance with the User's Guide is not covered.

BISSELL IS NOT LIABLE FOR INCIDENTAL OR CONSEQUENTIAL DAMAGES OF ANY NATURE ASSOCIATED WITH THE USE OF THIS PRODUCT. BISSELL'S LIABILITY WILL NOT EXCEED THE PURCHASE PRICE OF THE PRODUCT.

Some states do not allow the exclusion or limitation of incidental or consequential damages, so the above limitation or exclusion may not apply to you.

*EXCEPTIONS AND EXCLUSIONS FROM THE TERMS OF THE LIMITED WARRANTY

THIS WARRANTY IS EXCLUSIVE AND IN LIEU OF ANY OTHER WARRANTIES EITHER ORAL OR WRITTEN. ANY IMPLIED WARRANTIES WHICH MAY ARISE BY OPERATION OF LAW, INCLUDING THE IMPLIED WARRANTIES OF MERCHANTABILITY AND FITNESS FOR A PARTICULAR PURPOSE, ARE LIMITED TO THE ONE YEAR DURATION FROM THE DATE OF PURCHASE AS DESCRIBED ABOVE.

Some states do not allow limitations on how long an implied warranty last so the above limitation may not apply to you.

NOTE: Please keep your original sales receipt. It provides proof of date of purchase in the event of a warranty claim.

Service

If your BISSELL product should require service:

Visit BISSELL.com or contact BISSELL Consumer Care to locate a BISSELL Authorized Service Center in your area.

If you need information about repairs or replacement parts, or if you have questions about your warranty, contact BISSELL Consumer Care.

Website or E-mail:

www.BISSELL.com

Or Call:

BISSELL Consumer Care
1-800-237-7691

Monday - Friday 8am - 10pm ET

Saturday 9am - 8pm ET

Sunday 10am - 7pm ET



Register your product today!

Registering is quick, easy and offers you benefits over the lifetime of your product.

You'll receive:

BISSELL Rewards Points

Automatically earn points for discounts and free shipping on future purchases.

Faster Service

Supplying your information now saves you time should you need to contact us with questions regarding your product.

Product Support Reminders and Alerts

We'll contact you with any important product maintenance reminders and alerts.

Special Promotions

Optional: Register your email to receive notice of offers, contests, cleaning tips and more!

Visit www.BISSELL.com/registration now!

BISSELL Consumer Care

For information about repairs or replacement parts, or questions about your warranty:

Call:

BISSELL Consumer Care
1-800-237-7691

Monday - Friday 8 am - 10 pm ET
Saturday 9 am - 8 pm ET
Sunday 10am - 7pm ET

Email:

www.BISSELL.com

Visit the BISSELL website: www.BISSELL.com

When contacting BISSELL, have model number of cleaner available.

Please record your Model Number: _____

Please record your Purchase Date: _____

NOTE: Please keep your original sales receipt. It provides proof of purchase date in the event of a warranty claim. See Warranty on page 11 for details.



©2014 BISSELL Homecare, Inc
Grand Rapids, Michigan
All rights reserved. Printed in China
Part Number 160-4281 Rev 05/14
Visit our website at: www.BISSELL.com