



**Experts In Home Cleaning™**

# **FEATHERweight™**

**USER'S GUIDE**  
2562-E SERIES 220-240V

- 2** Thank You
- 3** Safety Instructions
- 4** Product View
- 4-5** Operation
- 5-6** Maintenance and Care
- 6** Troubleshooting
- 7** Consumer Services
- 7** Replacement Parts
- 8** Warranty



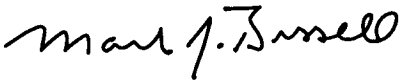
## Thanks for buying a BISSELL FeatherWeight™ Vacuum

We're glad you purchased a BISSELL FeatherWeight Vacuum. Everything we know about floor care went into the design and construction of this complete, high-tech home cleaning system.

Your BISSELL FeatherWeight vacuu, is well made, and we back it with a limited one year warranty. We also stand behind it with a knowledgeable, dedicated Consumer Services department, so, should you ever have a problem, you'll receive fast, considerate assistance.

My great-grandfather invented the floor sweeper in 1876. Today, BISSELL is a global leader in the design, manufacture, and service of high quality homeware products like your vacuum.

Thanks again, from all of us at BISSELL.



Mark J. Bissell  
Chairman, President & CEO

# IMPORTANT SAFETY INSTRUCTIONS

**When using an electrical appliance, basic precautions should be observed, including the following:**

**READ ALL INSTRUCTIONS BEFORE USING YOUR FEATHERWEIGHT VACUUM.**

## **⚠ WARNING - To reduce the risk of fire, electric shock, or injury:**

- Use indoors only.
  - Do not leave machine when it is plugged in.
  - Do not use with damaged cord or plug.
  - If appliance is not working as it should, has been dropped, damaged, left outdoors, or dropped into water, return it to a service agent.
  - Do not handle unit with wet hands.
  - Do not pull or carry by cord, use cord as a handle, close door on cord, pull cord around sharp corners or edges, run appliance over cord, or expose cord to heated surfaces.
  - Do not unplug by pulling on cord. Unplug by grasping plug.
  - Do not run appliance over cord.
  - Do not handle plug or appliance with wet hands.
  - Do not expose hair, loose clothing, fingers or body parts to openings or moving parts.
  - Do not pick up hot or burning objects such as cigarettes, matches, or hot ashes.
  - Do not pick up flammable or combustible materials (lighter fluid, petrol, kerosene, etc.) or use in the presence of explosive liquids or vapour.
  - Do not use appliance in an enclosed space filled with vapours given off by oil base paint, paint thinner, some moth proofing substances, flammable dust, or other explosive or toxic vapours.
  - Not intended for use by young children or infirm persons without supervision.
- Young children should be supervised to ensure that they do not play with the appliance.
  - Remove plug from electrical outlet before cleaning or maintaining the appliance.
  - If the supply cord is damaged, it must be replaced by the manufacturer or its service agent in order to avoid a hazard.
  - Do not pick up toxic material (chlorine bleach, ammonia, drain cleaner, petrol, etc.).
  - Do not allow to be used as a toy.
  - Do not use for any purpose other than described in this User's Guide.
  - Use only manufacturer's recommended attachments.
  - Do not use with any opening blocked; keep free of dust, lint, hair, and anything that may reduce air flow.
  - Keep appliance on a level surface.
  - Turn off all controls before unplugging.
  - Be extra careful when cleaning stairs.
  - This appliance is provided with double insulation. Use only identical replacement parts.
  - Do not use without debris tank and/or filters in place.
  - Pay close attention when working around children.

## **SAVE THESE INSTRUCTIONS**

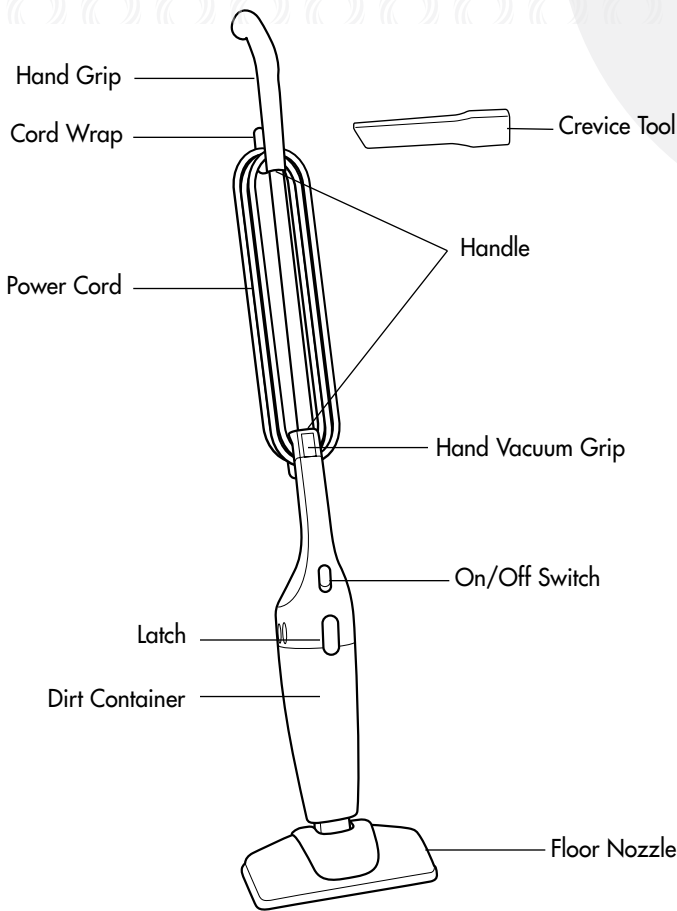
THIS MODEL IS FOR HOUSEHOLD USE ONLY.

**IMPORTANT** FOR  
OPERATION ON A 220/240 VOLT A.C.  
50/60 Hz POWER SUPPLY ONLY.

### **For residents of the United Kingdom Only**

If your appliance is fitted with a nonrewireable BS 1363 plug it must not be used unless a 13 amp (ASTA approved to BS 1362) fuse is fitted in the carrier contained in the plug. Spares may be obtained from your BISSELL supplier. If for any reason the plug is cut off, it must be disposed of, as it is an electric shock hazard should it be inserted into a 13 amp socket.

## Product view



### **How to use this guide**

This user's guide has been designed to help you get the most satisfaction from your BISSELL FeatherWeight vacuum. You'll find operating instructions, safety precautions, as well as maintenance and troubleshooting instructions. Please read this user's guide thoroughly before using your vacuum cleaner.



### **CAUTION:**

Do not plug in your vacuum cleaner until you are familiar with all instructions and operating procedures.

## Operations

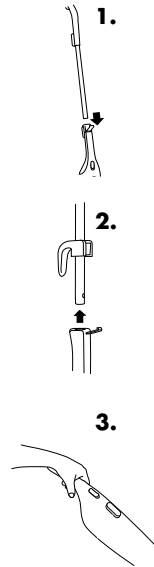
### **How to use your BISSELL FeatherWeight Vacuum**

**Your FeatherWeight vacuum may be used in one of three ways. See instructions below for converting your vacuum to best meet each need.**

# Operations

## How to use your BISSELL FeatherWeight Vacuum

- 1. As a Floor Vacuum:** Open the latch at the base of the hand vacuum grip and insert handle. Once handle is all the way inserted into the body of the vacuum, press the latch closed to secure the handle in place. Attach the floor nozzle by inserting it into the opening at the bottom of the dirt container. Press firmly to secure in place.
- 2. As a Hand Vacuum:** Release the latch from the handle and pull handle away from the unit. Press the latch closed.
- 3. As a Multi-Purpose Vacuum:** The crevice tool and floor nozzle may be used with either the hand vacuum or the floor vacuum. To use for cleaning in tight spaces, insert the crevice tool into the opening at the bottom of the dirt container. Press firmly to secure in place. To clean a wider surface, remove the crevice tool and attach the floor nozzle by inserting it into the opening at the bottom of the dirt container. Press firmly to secure in place.



## Power cord

1. Turn Vacuum off.
2. Unplug power cord by grasping the plug, NOT the cord, and disconnect from outlet.
3. Loop power cord around cord wraps on the handle.
4. Secure plug to power cord.

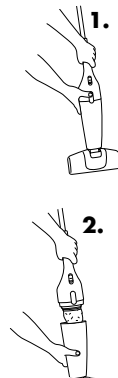


# Maintenance and care

To maintain maximum performance from your BISSELL FeatherWeight vacuum, perform these simple maintenance checks:

## Emptying the dirt container

1. To remove dirt from the dirt container and filter, hold the vacuum vertically as shown. Depress and hold latch on top of the vacuum to release the dirt container.
2. Gently pull dirt container away from the hand vacuum grip and empty into waste container.
3. The dirt container may be rinsed with warm water and a mild detergent if needed. The dirt container must be thoroughly dried before replacing.
4. Attach dirt container to vacuum by depressing latch and securely fitting onto hand vacuum grip. Make sure dirt container is correctly secured.



# Maintenance and care

## Cleaning the filter

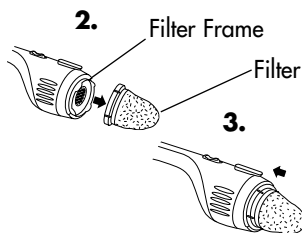
The key to maximum performance is a clean filter. Cleaning the filter after each use will help your FeatherWeight vacuum operate at peak efficiency.

Use only BISSELL replacement filters (#32019) in your BISSELL FeatherWeight.

1. Follow the steps on page 5 to remove dirt container.
2. Remove filter from the filter frame and shake over a waste container.
3. To replace the filter back onto the filter frame, line up the curved tabs of the filter frame with the curved notches on the filter, and push together to secure. The filter should be fully pressed against the unit to prevent dust from escaping.
4. Attach dirt container to vacuum by depressing latch and securely fitting onto hand vacuum grip. Make sure dirt container is correctly secured.
- 5 After heavy usage, you may clean the filter by washing it gently by hand in warm water and mild dish detergent. Rinse thoroughly and make certain it is completely dry before replacing it. If the filter is torn, replace it with a new filter.

## CAUTION:

Never operate your FeatherWeight vacuum without the filter in place. Doing so may damage the motor and void the warranty.



## WARNING:

To reduce the risk of injury from moving parts and/or electrical shock, turn Power Switch OFF and disconnect plug from electrical outlet before performing troubleshooting checks.

# Troubleshooting

## Vacuum cleaner won't run

### Possible causes

1. Power cord not firmly plugged in

### Remedies

1. Check electrical plug

## Vacuum cleaner doesn't vacuum effectively

### Possible causes

1. Filter clogged, wet or dry
2. Dirt container clogged

### Remedies

1. Follow instructions for cleaning filter on page 6
2. Follow instructions for emptying dirt container on page 5

## Dust blows out of the air vents

### Possible causes

1. Filter not properly secured to filter frame

### Remedies

1. Follow instructions for replacing filter on page 6

Other maintenance or service not included in the manual should be performed by an authorized service representative.

**Thank you for selecting a BISSELL product.**

**Please do not return this product to the store.**

# BISSELL consumer services

## If your BISSELL product should require service:

Please call BISSELL Consumer Services at the numbers below and we will give you the location of a BISSELL Authorized Service Center in your area. For all other countries, contact your local in country distributor for questions, service, or repair. If you have questions about your warranty or need replacement parts please contact the numbers below.

### For UK inquiries:

Monday – Thursday 9 am - 5 pm  
Friday 9 am - 4 pm

### BISSELL Homecare (Overseas) Inc.

Ground Floor  
226 Berwick Avenue  
Slough  
Berkshire, SL1 4QT  
United Kingdom  
Telephone: 0844.888.6644

### For all other inquiries:

Monday – Friday 8 am - 4 pm

### BISSELL Homecare, Inc.

PO Box 1888  
Grand Rapids, Michigan 49501 USA  
Telephone: 01-616-453-4451  
Fax: 01-616-453-1383

Or visit the BISSELL website - [www.bissell.com](http://www.bissell.com)

When contacting BISSELL, have model number of cleaner available.

Please record your Model Number: \_\_\_\_\_

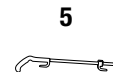
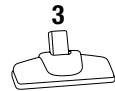
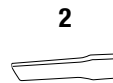
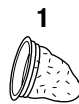
Please record your Purchase Date: \_\_\_\_\_

**NOTE: Please keep your original sales receipt. It provides proof of purchase date in the event of a warranty claim. See Warranty on page 8 for details.**

## Replacement parts

Below is a list of common replacement parts. While not all of these parts may have come with your specific machine, all are available to you for purchase, if desired.

Item	Part No.	Part Name
1	32019	Filter
2	203-2202	Crevice Tool
3	203-2203	Floor Nozzle
4	203-5517	Dirt Container
5	203-2250	Handle



# Warranty - FeatherWeight Vacuum

This warranty gives you specific legal rights, and you may also have other rights which may vary from country to country. If you need additional instruction regarding this warranty or have questions regarding what it may cover, please contact BISSELL Consumer Services by telephone, or regular post as described below, or contact your local in country distributor.

## Limited Six Month Warranty

Subject to the \*EXCEPTIONS AND EXCLUSIONS identified below, BISSELL will replace (with new or remanufactured components), at BISSELL's option, free of charge from the date of purchase by the original purchaser, for six months any defective or malfunctioning part do to manufacturers defect.

This warranty applies to product used for personal, and not commercial or rental service. This warranty does not apply to fans or routine maintenance components such as filters, belts, or brushes. Damage or malfunction caused by negligence, abuse, or use not in accordance with the User's Guide is not covered.

### For UK inquiries:

Monday – Thursday 9 am - 5 pm  
Friday 9 am - 4 pm

### BISSELL Homecare (Overseas) Inc.

Ground Floor  
226 Berwick Avenue  
Slough  
Berkshire, SL1 4QT  
United Kingdom  
Telephone: 0844.888.6644

BISSELL IS NOT LIABLE FOR INCIDENTAL OR CONSEQUENTIAL DAMAGES OF ANY NATURE ASSOCIATED WITH THE USE OF THIS PRODUCT. BISSELL'S LIABILITY WILL NOT EXCEED THE PURCHASE PRICE OF THE PRODUCT.

### \*EXCEPTIONS AND EXCLUSIONS FROM THE TERMS OF THE LIMITED WARRANTY

THIS WARRANTY IS EXCLUSIVE AND IN LIEU OF ANY OTHER WARRANTIES EITHER ORAL OR WRITTEN. ANY IMPLIED WARRANTIES WHICH MAY ARISE BY OPERATION OF LAW, INCLUDING THE IMPLIED WARRANTIES OF MERCHANTABILITY AND FITNESS FOR A PARTICULAR PURPOSE, ARE LIMITED TO THE SIX MONTH DURATION FROM THE DATE OF PURCHASE AS DESCRIBED ABOVE.



Experts In Home Cleaning™

©2012 BISSELL Homecare, Inc  
Grand Rapids, Michigan  
All rights reserved. Printed in China  
Part Number 110-4502  
Rev 12/11  
Visit our website at:  
[www.bissell.com](http://www.bissell.com)

