



# LITTLEgreen®

PROHEAT®

## USER'S GUIDE

### 1425 Series

2 Thanks / Consumer Services

3 Safety Instructions

4 Product View

5 Product Features

6 Assembly

7-8 Operation

8-9 Maintenance and care

10 Troubleshooting

11 Replacement Parts

11 Accessories

12 Warranty



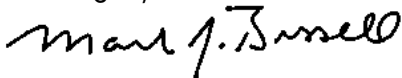
## Thanks for buying a BISSELL Little Green PROheat

We're glad you purchased a BISSELL Little Green PROheat. Everything we know about floor care went into the design and construction of this complete, high-tech home cleaning system.

Your Little Green PROheat is well made, and we back it with a limited one-year warranty. We also stand behind it with a knowledgeable, dedicated Consumer Services department, so, should you ever have a problem, you'll receive fast, considerate assistance.

My great-grandfather invented the floor sweeper in 1876. Today, BISSELL is a global leader in the design, manufacture, and service of high quality homecare products like your Little Green.

Thanks again, from all of us at BISSELL.



**Mark J. Bissell**

**President and Chief Executive Officer**

## BISSELL Consumer Services

For information about repairs or replacement parts, or questions about your warranty, call:

### **BISSELL Consumer Services**

**1-800-237-7691**

Monday - Friday 8 a.m. — 10 p.m. EST

Saturday 9 a.m. — 8 p.m. EST

Or write:

BISSELL HOMECARE, INC

PO Box 3606

Grand Rapids MI 49501

ATTN: Consumer Services

Or visit the BISSELL website - **[www.bissell.com](http://www.bissell.com)** or **[www.2xbissell.com](http://www.2xbissell.com)**

When contacting BISSELL, have model number of unit available.

Please record your Model Number: \_\_\_\_\_

Please record your Purchase Date: \_\_\_\_\_

**NOTE: Please keep your original sales receipt. It provides proof of date of purchase in the event of a warranty claim. See "About Your Warranty" on page 12 for details.**

**Please register your new BISSELL product at**  
**[www.bissell.com/productregistration](http://www.bissell.com/productregistration)**

# IMPORTANT SAFETY INSTRUCTIONS

When using an electrical appliance, basic precautions should be observed, including the following:

Read all instructions before using your LITTLE GREEN® PROHEAT®

## **⚠ WARNING:** To reduce the risk of fire, electric shock, or injury:

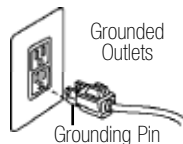
- Do not use for any purpose other than described in this User's Guide.
- Use only BISSELL cleaning products intended for use in this appliance.
- Use only manufacturer's recommended attachments.
- Do not expose to rain, store indoors.
- Do not handle LITTLE GREEN® PROheat® plug or appliance with wet hands.
- Do not leave LITTLE GREEN® PROheat® when it is plugged in.
- Do not put any object into appliance openings or use with blocked openings. Keep free of dust, lint, hair, and anything that may reduce air flow.
- Do not expose hair, loose clothing, fingers or body parts to openings or moving parts.
- Keep appliance on a level surface.
- Be extra careful when cleaning stairs.
- Do not carry the appliance while in use.
- Never spray at people or animals.
- Do not allow to be used as a toy. Close attention is necessary when used by or near children.
- Do not pick up hot or burning objects.
- Do not pick up flammable or combustible materials (lighter fluid, gasoline, kerosene, etc.) or use in the presence of explosive liquids or vapor.
- Do not pick up toxic material (chlorine bleach, ammonia, drain cleaner, gasoline, etc.).
- Do not use appliance in an enclosed space filled with vapors given off by oil base paint, paint thinner, some moth proofing substances, flammable dust, or other explosive or toxic vapors.
- Do not pull or carry by cord, use cord as a handle, close door on cord, pull cord around sharp corners or edges, run appliance over cord, or expose cord to heated surfaces.
- Do not use with damaged cord or plug.
- Turn off all controls before unplugging.
- Unplug before attaching the TurboBrush.
- Unplug from outlet when not in use and before conducting maintenance and troubleshooting.

- Do not use LITTLE GREEN® PROheat® if it has been dropped, damaged, left outdoors or dropped into water. Have it repaired at an Authorized Service Center.
- Unplug by grasping the plug, not the cord. Do not unplug by pulling on cord.
- Always connect to a properly grounded outlet; see grounding instructions.
- Do not modify the 3-prong grounded plug.

## SAVE THESE INSTRUCTIONS

### GROUNDING INSTRUCTIONS

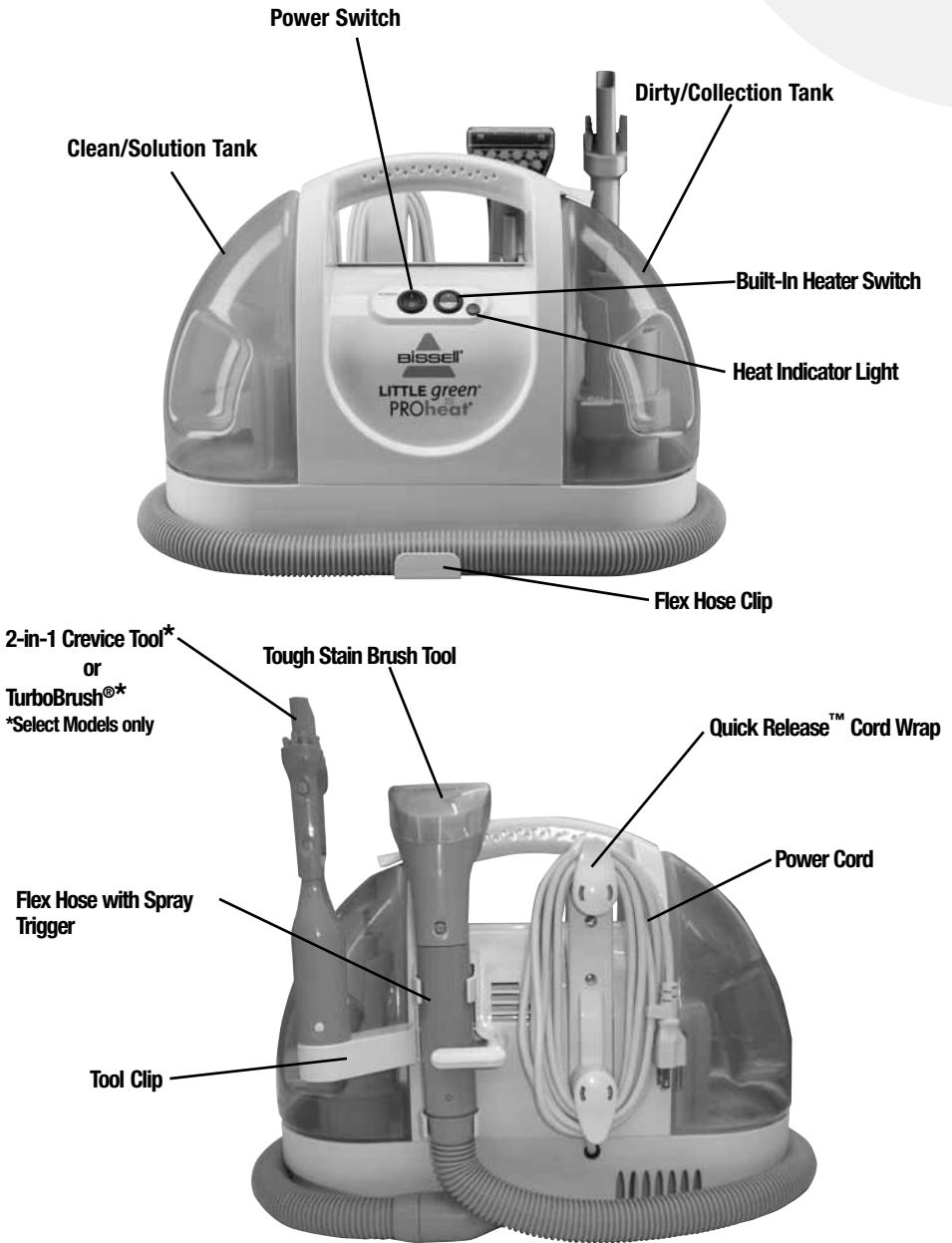
This appliance must be connected to a grounded wiring system. If it should malfunction or break down, grounding provides a safe path of least resistance for electrical current, reducing the risk of electrical shock. The cord for this appliance has an equipment-grounding conductor and a grounding plug. It must only be plugged into an outlet that is properly installed and grounded in accordance with all local codes and ordinances.



**⚠ WARNING:** Improper connection of the equipment-grounding conductor can result in a risk of electrical shock. Check with a qualified electrician or service person if you aren't sure if the outlet is properly grounded. **DO NOT MODIFY THE PLUG.** If it will not fit the outlet, have a proper outlet installed by a qualified electrician. This appliance is designed for use on a nominal 120-volt circuit, and has a grounding attachment plug that looks like the plug in the drawing above. Make certain that the appliance is connected to an outlet having the same configuration as the plug. No plug adapter should be used with this appliance.

This model is for household use only.

# Product view



## Product Features

### Built-in-Heater switch (red)

The Little Green ProHeat® models give you the ability to raise the water temperature for improved cleaning performance based on your cleaning needs.

### Heat indicator light

After turning the Built-In Heater Switch on, the Heat Indicator Light will illuminate, indicating the heater has reached the correct temperature.

### Flex hose clip

The clip guides the storage of the vacuum flex hose around the unit.

### TurboBrush clip

Attaches to the unit for storage of the 2-in-1 crevice tool or TurboBrush.

### Tough stain brush

The standard tool that attaches to the Flex Hose.

### Quick Release cord wrap

To remove the Power Cord, gently twist/rotate the Quick Release Cord Wrap clockwise

### Power Cord

The Power Cord, with a three-prong plug, stores on the back of the Little Green by wrapping around the Quick-Release Cord Wrap.

**NOTE:** Unwrap the Power Cord completely before operating the unit.



### **WARNING:**

Do not use an extension cord with this product. The use of an extension cord may result in a severe electrical shock, particularly if the extension cord does not have an electrical rating higher than that of the product, OR if the extension cord does not have a three-prong grounding plug and if the extension cord is not plugged into a circuit box with a ground fault circuit interrupter. Safety precautions such as keeping all connections off the ground and dry will not eliminate the danger.



### **WARNING:**


Do not use this product while on any type of ladder. Do not place the product in a place where it will be stepped on or kicked while in use. Do not place the product on an elevated surface where it may be pulled off the surface while in use.



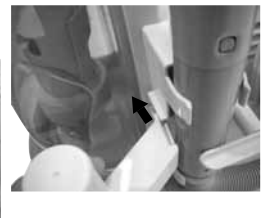
### **WARNING:**

Use only BISSELL Little Green formula in your cleaner. Use of cleaning formulas which contain lemon or pine oil may damage this appliance and void the warranty. Chemical spot cleaners or solvent-based soil removers also should not be used. These products may react with the plastic materials used in your cleaner, causing cracking or pitting.

# Assembly

Assembling your Little Green PROheat is a <sup>1.</sup> simple process. The only thing you will need to assemble your cleaner is a Phillips head  screwdriver.

1. Slide the back plate of the flex hose clip into the opening on the front of the unit. You will hear a "snap" when it is locked in place.
2. Take the flex hose storage bracket and slide the lower plate into the opening on the back of unit. Make sure the screw holes line up.
3. Insert screw and tighten with a screwdriver.
4. Wrap the flex hose around unit and place hose grip into bracket. Turn bracket latch clockwise to lock in place.
5. Slide tool clip into slit on flex hose storage bracket place tool on clip



# Operation

## Getting ready

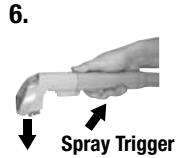
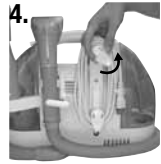
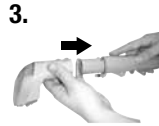
1. To fill the clean/solution tank.
  - A. Remove the tank by lifting it straight up and then away from the unit.
  - B. Unscrew the black cap at the bottom of the clean/solution tank.
  - C. Add BISSELL 2X Little Green Formula to the FORMULA fill line on the clean/solution tank. Fill the clean/Solution tank with hot (NOT boiling) tap water to the WATER fill line. Replace and tighten the black cap.
  - D. Replace the clean/solution tank by lining up the vertical guides on the left side of the unit with the indentations on the clean/solution tank and gently sliding it down into position.



# Operation

## Getting ready (continued)

2. Unwrap vacuum flex hose completely from onboard hose storage.
3. Attach your selected cleaning tool to the spray trigger unit by pressing tool onto spray trigger firmly until the button lock snaps into hole. Make certain the tool is securely attached.
4. Twist the quick release cord wrap clockwise to unwrap the power cord completely from onboard cord storage and plug into 120 Volt, 60 Hz grounded outlet as described in Important safety Instructions, page 3.
5. Press power switch to ON position. Press the red heater switch to "ON". Within 30 seconds, the heat indicator light will illuminate, indicating the heater has reached the proper temperature.
6. Begin by pressing the spray trigger for 5-10 seconds to allow the non-heated water to travel through the heater.
7. Press and hold spray trigger—spray will start in a few seconds. Raise the tool slightly to check for spray.



## Pre-treating

**Cleaning effectiveness will be enhanced if you pre-treat heavily stained or highly-soiled areas. Here's how to do it:**

1. Hold the cleaning tool just above the surface of the carpet or upholstery to be cleaned. Press the trigger to release a spray of cleaning solution directly onto the soiled area.
2. Wait 3-5 minutes before cleaning.



## **WARNING:**

Be sure to unplug the cord before attaching the TurboBrush (select models only).

## Operation

### Cleaning with your Little Green PROheat

1. Hold the tool approximately 1" above the soiled surface. Press the spray trigger to apply the cleaning solution to the soiled area.
2. Using the brush on the tool, gently scrub the area to be cleaned.  
**Note: If using the TurboBrush, the switch should be in the "BRUSH" position. This activates the brush only.**
3. For thorough cleaning, spray additional solution while the brush and suction are in contact with the surface.
4. Apply downward pressure on the tool and pull it toward you. The suction will remove the dirt and cleaning solution. Continue until no more dirt can be removed.  
**Note: If using the TurboBrush, move the switch to the "SUCTION" position. This activates the suction to remove the dirt and cleaning solution. Move the switch back to the "BRUSH" position for additional brushing action.**
5. As a final step, use "drying strokes" (by not pressing the spray trigger) to remove as much liquid/moisture as possible. Repeat this step as often as necessary.  
**Note: If using the TurboBrush, move the switch to the "SUCTION" position. This activates the suction to remove the dirt and cleaning solution.**

2.



### **IMPORTANT:**

**Check the manufacturer's tag before cleaning upholstery. "W" or "WS" on the tag means you can use your Little Green. If tag is coded with an "S" (with diagonal strike-through), or says "Dry Clean Only," do not proceed. If manufacturer's tag is missing or not coded, check with your furniture dealer.**

#### *Tip:*

Deep cleaning stairs and high-traffic areas on a regular basis can prolong carpet life.

#### *Tip:*

Check upholstery stuffing before cleaning. Colored stuffing may bleed through the fabric when it becomes wet.

## Maintenance and care

### After cleaning

1. Turn Power Switch to OFF position.
2. Unplug Power Cord from outlet.  
**Note: If a significant amount of Little Green formula/water remains, it is all right to leave it in the Clean/Solution Tank for your next cleaning task.**
3. Empty and rinse the Dirty/Collection Tank after each use, OR when dirty water reaches the indicated maximum fill line. To remove the tank, lift up the Dirty/Collection Tank retainer lever and remove the tank from the unit.

3.

#### Retainer Lever





# Maintenance and care

## After cleaning continued

4. Disconnect the cleaning tool from the spray trigger by pushing down on button lock and pulling straight off  
**(DO NOT twist tools to remove them)**
5. Once removed from the spray trigger, all tools can be cleaned by rinsing under clean running water. The TurboBrush tool's switch must be in "SUCTION" position before rinsing under clean running water.
6. Check spray nozzle for accumulated dirt or debris. If necessary, clean with soft bristle brush.

## Machine storage

1. Wipe all surfaces with a soft cloth.
2. Wrap power cord around the cord wrap on the back of the Little Green PROheat .
3. Wrap flex hose around the base of the unit and secure the spray trigger.
4. Store unit in protected, dry area, at room temperature (40° to 110°F).

### *Tip:*

Before turning off the Little Green, suction up clean water to thoroughly rinse out the interior of the flex hose. Then, lift the cleaning tool and point it upwards to drain any remaining water into the dirty/ collection tank.



### **WARNING:**

**Keep spray away from face.  
Failure to do so may result in  
personal injury.**

# Troubleshooting

## Reduced spray or no spray

### Possible Causes

1. Tank release latch is not closed properly
1. Spray nozzle clogged
2. Clean/solution tank empty
3. Clean/solution tank insert clogged
4. Pump needs priming

## Deep cleaner won't pick up cleaning solution

### Possible Causes

1. Poor upholstery/carpet tool position
2. Dirty/collection tank is full
3. Upholstery/carpet tool brush worn
4. Excess solution in vacuum flex hose
5. Incorrect Cleaning Formula

## TurboBrush attachment-brush will not turn

### Possible Causes

1. Incorrect switch position on TurboBrush

## TurboBrush attachment- no suction

### Possible Causes

1. Incorrect switch position on TurboBrush

### Remedies

1. Lift up the tank release latch and press down firmly to make sure it is in place
1. Clean spray nozzle
2. Check/refill tank
3. Clean insert at bottom of Clean/solution tank
4. Gently lift clean/solution tank while depressing the spray trigger OR gently squeeze clean tank while depressing spray trigger

### Remedies

1. Reposition upholstery/carpet tool on surface, follow recommended cleaning procedures
2. Empty dirty/collection tank
3. Replace with new brush
4. Lift tool and point upwards to allow water in hose to flow into the dirty/collection tank
5. Use BISSELL 2X Little Green formula only

### Remedies

1. Reposition switch to brush position

### Remedies

1. Reposition switch to suction position

**Thank you for selecting a BISSELL product.  
Please do not return this product to the store**

**For any question or concern, BISSELL is happy to be of service.  
Contact us directly at 1-800-237-7691**

## Replacement parts -

Item	Part No.	Part Name
1	203-5008	Clean/Solution Tank (includes cap and insert assembly)
2	203-5009	Collection/Dirty Tank (includes the airstack and float assembly)
3	203-5011	Quick Release Cord Wrap
4	203-5012	Tool Clip
5	203-5013	Flex Hose Clip
6	203-5014	Cap & Insert Assembly

1



2



3



4



5



6



## Accessories -

Item	Part No.	Part Name
1	203-6868	4" Upholstery/Carpet Tool
2	203-6654	6" Upholstery/Carpet Tool
3	203-6872	Spraying Crevice Tool - Dusk
4	314-9162	Tough Stain Brush Tool- Dusk
5	203-6652	TurboBrush - Dusk
6	79B9	BISSELL 2X Little Green® Formula 32 oz.
7	79B9-1	BISSELL 2X Little Green® Formula 16 oz.
8	74R7	BISSELL 2X Pet Odor & Stain Removal Formula 32 oz.
9	74R7-1	BISSELL 2X Pet Odor & Stain Removal Formula 16 oz.

1



2



3



4



5



6



7



8



9



## Earn Rewards Points!

To qualify you for discounts, rebates, and other BISSELL perks.  
Visit [www.bissell.com/rewards](http://www.bissell.com/rewards) to learn more.

# Warranty - BISSELL Little Green PROheat

This warranty gives you specific legal rights, and you may also have other rights which may vary from state to state. If you need additional instruction regarding this warranty or have questions regarding what it may cover, please contact BISSELL Consumer Services by E-mail, telephone, or regular mail as described below.

## Limited One Year Warranty

Subject to the **\*EXCEPTIONS AND EXCLUSIONS** identified below, upon receipt of the product BISSELL Homecare, Inc. will repair or replace (with new or remanufactured components or products), at BISSELL's option, free of charge from the date of purchase by the original purchaser, for one year any defective or malfunctioning part.

See information below on "If your BISSELL product should require service".

This warranty applies to product used for personal, and not commercial or rental service. This warranty does not apply to fans or routine maintenance components such as filters, belts, or brushes. Damage or malfunction caused by negligence, abuse, neglect, unauthorized repair, or any other use not in accordance with the User's Guide is not covered.

**NOTE: Please keep your original sales receipt. It provides proof of date of purchase in the event of a warranty claim.**

### If your BISSELL product should require service:

Contact BISSELL Consumer Services to locate a BISSELL Authorized Service Center in your area.

If you need information about repairs or replacement parts, or if you have questions about your warranty, contact BISSELL Consumer Services.

#### Website or E-mail:

[www.bissell.com](http://www.bissell.com), Use the "Customer Services" tab.

**Or visit:** [www.2Xbissell.com](http://www.2Xbissell.com)

#### Or call:

BISSELL Consumer Services

1-800-237-7691

Monday - Friday 8 a.m. - 10 p.m. ET

Saturday 9 a.m. - 8 p.m. ET

#### Or write:

BISSELL Homecare Inc.

PO Box 3606

Grand Rapids MI 49501

ATTN: Consumer Services

BISSELL HOMECARE, INC. IS NOT LIABLE FOR INCIDENTAL OR CONSEQUENTIAL DAMAGES OF ANY NATURE ASSOCIATED WITH THE USE OF THIS PRODUCT. BISSELL'S LIABILITY WILL NOT EXCEED THE PURCHASE PRICE OF THE PRODUCT.

**Some states do not allow the exclusion or limitation of incidental or consequential damages, so the above limitation or exclusion may not apply to you.**

### \*EXCEPTIONS AND EXCLUSIONS FROM THE TERMS OF THE LIMITED WARRANTY

THIS WARRANTY IS EXCLUSIVE AND IN LIEU OF ANY OTHER WARRANTIES EITHER ORAL OR WRITTEN. ANY IMPLIED WARRANTIES WHICH MAY ARISE BY OPERATION OF LAW, INCLUDING THE IMPLIED WARRANTIES OF MERCHANTABILITY AND FITNESS FOR A PARTICULAR PURPOSE, ARE LIMITED TO THE ONE YEAR DURATION FROM THE DATE OF PURCHASE AS DESCRIBED ABOVE.

Some states do not allow limitations on how long an implied warranty lasts, so the above limitation may not apply to you.

**NOTE: Please keep your original sales receipt. It provides proof of date of purchase in the event of a warranty claim**



©2009 BISSELL Homecare, Inc.  
Grand Rapids, Michigan  
All rights reserved. Printed in China  
Part Number 120-4142  
Rev 10/09  
Visit our website at:  
[www.bissell.com](http://www.bissell.com)

