

**TORNADO INDUSTRIES**  
7401 W. LAWRENCE AVENUE  
CHICAGO, IL 60706  
(708) 867-5100 FAX (708) 867-6968  
[www.tornadovac.com](http://www.tornadovac.com)



## **Operation & Maintenance Manual**

For Commercial Use Only



## **ABSOLUTE FILTER VAC – MODEL 125**

**CATALOG NO.**  
**98606 (115V)**  
**98607 (230V)**

## NOTES

This illustrated parts book covers:

<b>Catalog #</b>	98606	98607
<b>Voltage</b>	115vac	230vac
<b>Amperage</b>	12	6
<b>Horsepower</b>	1.1	1.1
<b>Series</b>	C	C

### **Table of Contents:**

Safety Instructions	4
Grounding Methods	5
Main Assembly Diagram	6
Main Assembly Parts List	7
Operating Instructions	8

### **Warranty:**

Your Absolute Filter Vac Model 127 is warranted for 1 year parts and labor. This warranty does not cover consumables such as filters and collection bags.

# IMPORTANT SAFETY INSTRUCTIONS

When using an electrical appliance, basic precautions should always be followed, including the following:

**READ ALL INSTRUCTIONS  
BEFORE USING THIS APPLIANCE**

**WARNING** To reduce the risk of fire, electric shock, or injury:

Connect to a properly grounded outlet only, see grounding instructions.

Do not leave appliance when plugged in. Unplug from outlet when not in use and before servicing.

Electrical shock could occur if used outdoors or on wet surfaces.

Do not allow to be used as a toy. Close attention is necessary when used by or near children.

Use only as described in this manual. Use only manufacturer's recommended attachments.

Do not use with damaged cord or plug. If appliance is not working as it should, has been dropped, damaged, left outdoors, or dropped into water, return it to a service center.

Do not pull or carry by cord, use cord as a handle, close a door on cord, or pull cord around sharp edges or corners. Do not run appliance over cord. Keep cord away from heated surfaces.

Do not unplug by pulling on cord. To unplug, grasp the plug, not the cord.

Do not handle plug or appliance with wet hands.

Do not put any object into openings. Do not use with any opening blocked; keep free of dust, lint, hair, and anything that may reduce air flow.

Keep hair, loose clothing, fingers, and all parts of body away from openings and moving parts.

Do not pick up anything that is burning or smoking, such as cigarettes, matches, or hot ashes.

Do not use without dustbag and/or filters in place.

Turn off all controls before unplugging.

Use extra care when cleaning on stairs.

Do not use to pick up flammable or combustible liquids such as gasoline or use in areas where they may be present.

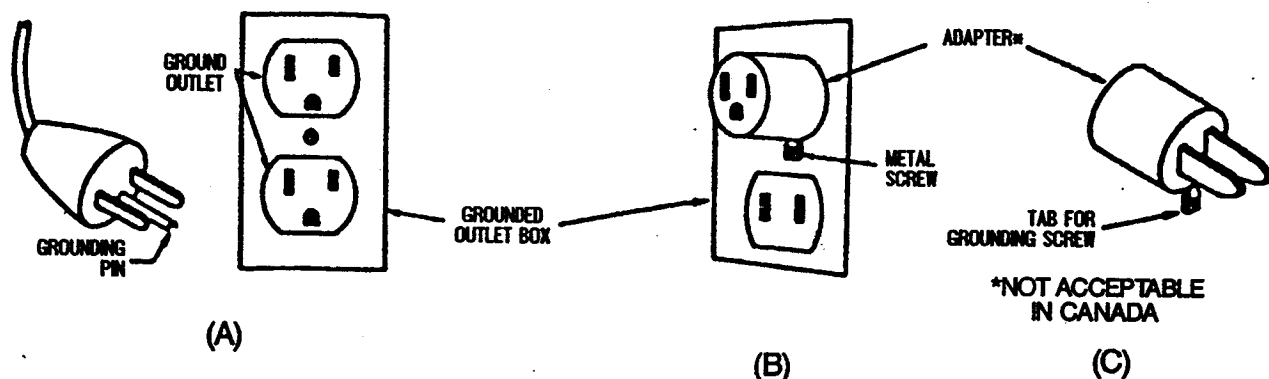
Do not operate this machine for wet pick-up applications.

When unit is not in use, coil cord and place in utility basket

Before operating your TORNADO R equipment, make sure the voltage and current used are the same as indicated on the nameplate.

## SAVE THESE INSTRUCTIONS

## GROUNDING METHODS



### GROUNDING INSTRUCTIONS

This appliance must be grounded. If it should malfunction or break down, grounding provides a path of least resistance for electric current to reduce the risk of electric shock. This appliance is equipped with a cord having an equipment-grounding conductor and grounding plug. The plug must be plugged into an appropriate outlet that is properly installed and grounded in accordance with all local codes and ordinances.

**DANGER:** improper connection of the equipment-grounding conductor can result in a risk of electric shock. Check with a qualified electrician or service person if you are in doubt as to whether the outlet is properly grounded. Do not modify the plug provided with the appliance; if it will not fit the outlet, have a proper outlet installed by a qualified electrician.

This appliance is for use on a nominal 120-volt circuit, and has a grounding plug that looks like the plug illustrated in sketch A. A temporary adapter that looks like the adapter illustrated in sketches B and C may be used to connect this plug to a 2-pole receptacle as shown in sketch B if a properly grounded outlet is not available. The temporary adapter should be used only until a properly grounded outlet (sketch A) can be installed by a qualified electrician. The green-colored rigid ear, lug, or the like, extending from the adapter must be connected to a permanent ground such as a properly grounded outlet box cover. Whenever the adapter is used, it must be held in place by a metal screw.

### EXTENSION CORDS

Use only three-wire extension cords which have three-prong grounding-type plug caps and three-pole receptacles that accept the appliance's plug. Extension cords should be the equivalent or a size heavier than the input cord. Replace or repair damaged cords.

## 98606/98607 Main Assembly Diagram

When ordering replacement parts, designate the machine catalog number, part number and part description to avoid receiving incorrect items.

The machine catalog number can be obtained from the name plate on the powerhead of the machine.

### Accessories

#### **Poly Tool Set Kit #98633 contains:**

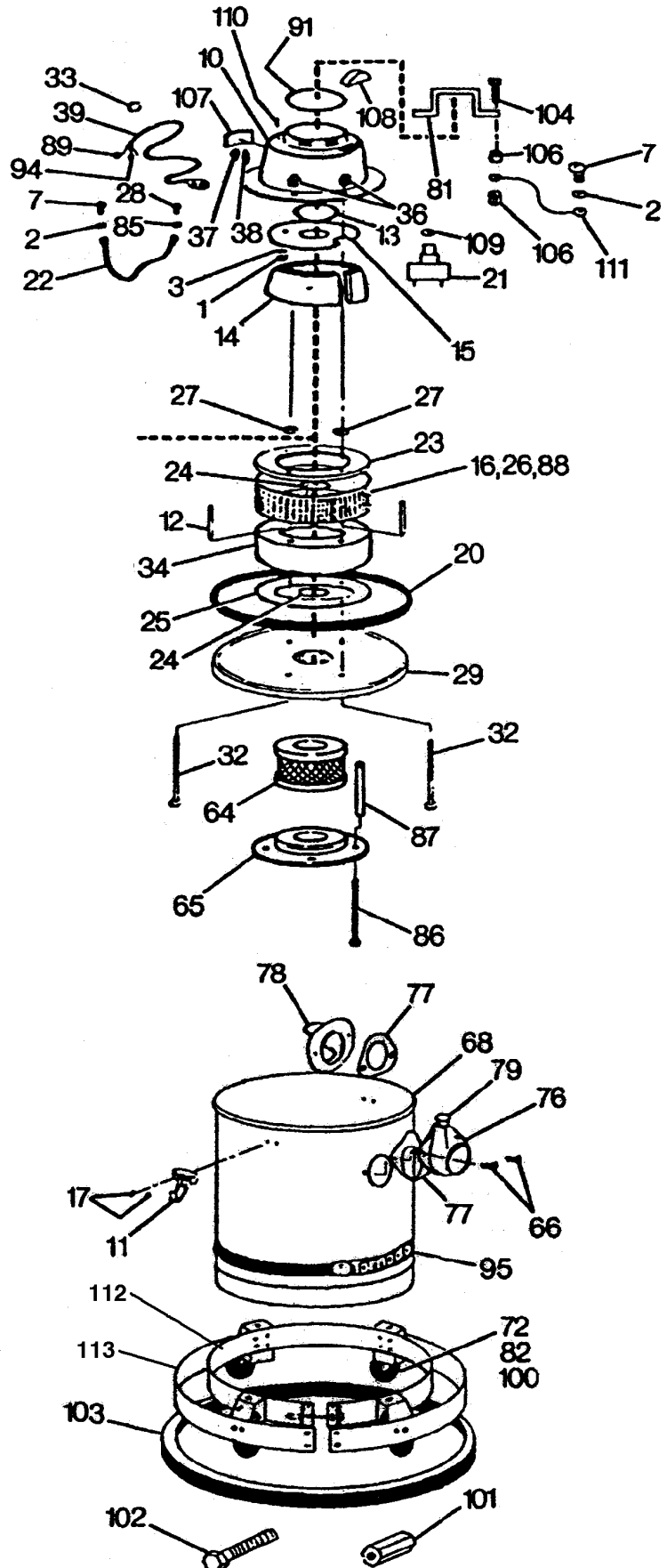
- #90289 crush-proof 10' hose
- #30258 2-pc double-bend aluminum wand with tool coupling
- #31663 14" plastic floor/rug tool
- #90004 15" crevice tool
- #90712 round dust brush

#### **Anti-Static Tool Set Kit #98645 contains:**

- #90684 15' anti-static hose
- #90004 15" crevice tool
- #90712 round dust brush
- #31664 22" rubber blower nozzle

### Consumables:

- #90505 3-mil plastic disposal bag, 50-pack
- #90567 1-bu paper collection bag, 12-pack
- #98588 primary paper filter collector, 12-pack
- #90603 reusable SCAFITEX Dacron impact filter, 1-pack
- #90608 pleated HEPA filter, 1-pack



## 98606 (115v) & 90607 (230v) Main Parts List

Item #	Description	Part #
1	Nut	17883
1	Lock washer	1713
3	Washer	1575
7	Screw	3261
10	Motor cover	17885
11	Catch	18573
12	Spacer	17889
13	Insulation disc	2922
14	Insulation strip	2923
15	Baffle plate	17886
16	Nut	2958
17	Rivet	04972
20	Bumper	10672
21	Switch	16035
22	Ground lead	6354
23	Mounting plate	17888
24	Motor gasket	02941
25	Mounting plate	17897
26	Ring	10689
27	Jam nut	10694
28	Screw	2376
29	Lower cover S/A	17898
30	Washer	3658
32	Screw	10787
33	Connector	6824
34	Silencer	10695
36	Acorn nut	685
37	Strain relief bushing	14552
38	Adapter clip	2962
39	Supply cable (115v)	14411
64	HEPA filter	90608
65	Adapter	16492
66	Screw	64
68	Tank only	14092
72	Caster	10669
76	Tank intake	2914
77	Gasket	2915
78	Intake deflector	14433
79	Intake lock sub-assy	8080
81	Handle – vac head	17890
82	Nut	3868
85	Lockwasher	1246
86	Screw	14991
87	Spacer	6182
88	Screw	1734

91	Nameplate	30812
94	Terminal	611
95	Nameplate	30816
100	Washer	3321
101	Nut ¼-20 x 1"	13910
102	Screw ¼-20 x 3-1/2"	13909
103	Bumper	11942
104	Screw	2038
106	Nut	16129
107	Decal - warning	17881
108	Switch guard	17880
109	Lockwasher	14259
110	Screw	17884
111	Lead	17893
112	Carrier band	13905
113	Bumper band	13906
**	Motor Wiring Terminal	15139
**	Motor assy (115v only)	14800
**	Carbon brushes	23384
**	Carrier Assembly	13911
**	Decal – hazmat caution	14449
**	Line filter (230v only)	31067
**	Power cord (230v only)	31059
**	Motor assy (230v only)	17425

\*\* Not illustrated

# OPERATING INSTRUCTIONS

## Four general rules to follow:

1. Keep your vacuum clean. Never use it without filters, and make sure that *all* filters are properly fitted. See the sections below on filters and bags.
2. Provide a proper storage area for the machine and attachments. Remove the hose and attachments from the machine when not in use.
3. Always be certain that the top vacuum unit is nested properly on the tank, and that the tank latches are secure.
4. Whenever you are working around toxic or hazardous substances, always wear suitable protective clothing and carefully follow safety procedures as outlined by your safety coordinator. This is particularly important when opening the unit to change bags or filters.

## Installing filter and bags – 90505 Plastic Disposal Bag, 90567 Paper Collection Bag & 98588 Primary Paper Filter Protector

### Installation:

1. Open the tank latches and remove the vacuum unit from the tank.
2. Open the 3-mil plastic disposal bag and set it open in the bottom of the tank. Do not allow the rim of this bag to rest any higher than the tank's metal intake.
3. Cradle the paper collection bag in the tank. Open the yellow flap, take hold of the cardboard backing on the bag and fit it over the metal intake. Make certain the integral hole gasket is sealed all around the intake tube.
4. Stretch the collection bag out in the tank.
5. Place the primary paper filter protector into the tank and over the tank's rim. This protects the Dacron impact and HEPA filters. Make sure that the protector's elastic band is fully over the tank's rim.
6. Replace the vacuum unit on the tank, making sure it is seated properly, and secure the latches.

### Removal:

1. Unplug the unit's power cord.
2. Open the tank latches and remove the vacuum unit from the tank.
3. Remove the primary paper filter protector from the tank's rim. Unseat the paper collection bag's cardboard-backed hole from the metal intake. Use the bag's yellow flap to seal the bag's intake hole.
4. Reach under the collection bag and raise the opening of the plastic disposal bag to fully surround both the collection bag and the primary paper filter protector.
5. Seal the plastic disposal bag carefully and dispose of it properly.



## **Changing the HEPA Filter**

1. The HEPA filter should be checked periodically and replaced when necessary.
2. To remove the HEPA filter, first remove the primary paper filter protector and Dacron filter. Then remove the four screws under the HEPA filter.
3. Install a new HEPA filter with its open end toward the motor.
4. Replace the four screws, tighten, and replace the Dacron filter and primary paper filter protector.

## **Using the Filter Gauge**

A manometer filter gauge beside the motor indicates when a filter requires inspection. This ensures filter integrity while the CVF 125 is in operation, and ensures that the unit is functioning at optimal efficiency.

When the gauge's center indicator turns red while the motor is on, first change the plastic disposal bag, paper collection bag & primary paper filter protector as previously described. If the indicator remains red or quickly returns to red after changing these filters, change the Dacron filter protector and HEPA filter element.

Note that a poorly-seated vacuum unit can also cause vacuum loss and trip the indicator, so always ensure that the vacuum unit is seated properly on the tank.

## **Maintenance of motor unit**

Damage to an armature is often caused by permitting the carbon brushes to become worn to less than 1/2-inch in length. To prevent this occurrence, inspect the brushes after 500 hours of operation and frequently thereafter, replacing them when necessary. It is best practice to replace brushes when they are worn to half their original length. The original length is approximately 1-1/4". Failure to properly replace worn brushes will nullify our warranty.

To inspect the brushes, detach the vacuum housing from the tank. Remove the nuts holding the motor cover. Carefully remove the plastic motor cap by prying the holding clips. Remove the metal bracket holding each brush, then remove the brush.

No other maintenance of the motor should be attempted during the first year after purchase.